



**JAMES  
ANDERSON**

4-6 St. John's Avenue  
London SW15  
Guide Price £650,000





## 4-6 St. John's Avenue London SW15

Set within a well-maintained purpose built development on the highly desirable St. John's Avenue, SW15, this excellent sized two bedroom fourth floor apartment offers an impressive 868 sq ft of well-balanced living space, ideal for both owner occupiers and investors alike.

The property comprises two generous double bedrooms, both featuring built-in storage, providing practical and clutter-free living. The principal bedroom is particularly spacious, while the second bedroom comfortably accommodates a double bed and additional furnishings, making it ideal as a guest room, home office or sharers' accommodation.

A standout feature of the apartment is the excellent sized reception room, offering ample space for both seating and dining areas. Large windows allow for plenty of natural light, creating a bright and welcoming atmosphere throughout the day. The layout lends itself perfectly to entertaining, relaxing, or working from home.

The fitted kitchen is well arranged with a range of wall and base units, providing good storage and preparation space. There is room for appliances and potential to update to personal taste, offering buyers an opportunity to add value if desired.

The accommodation is completed by a three piece bathroom suite, neatly presented and conveniently positioned off the hallway. Additional storage within the flat further enhances the practicality of the layout.

St. John's Avenue is ideally located for the green open spaces of Putney Heath and Wimbledon Common, while Putney High Street offers a wide selection of shops, cafes, restaurants and transport links including Putney mainline station and East Putney Underground station (District Line), providing easy access into Central London.

A spacious and well located apartment in a sought after residential setting.

Tenure - Share of Freehold



































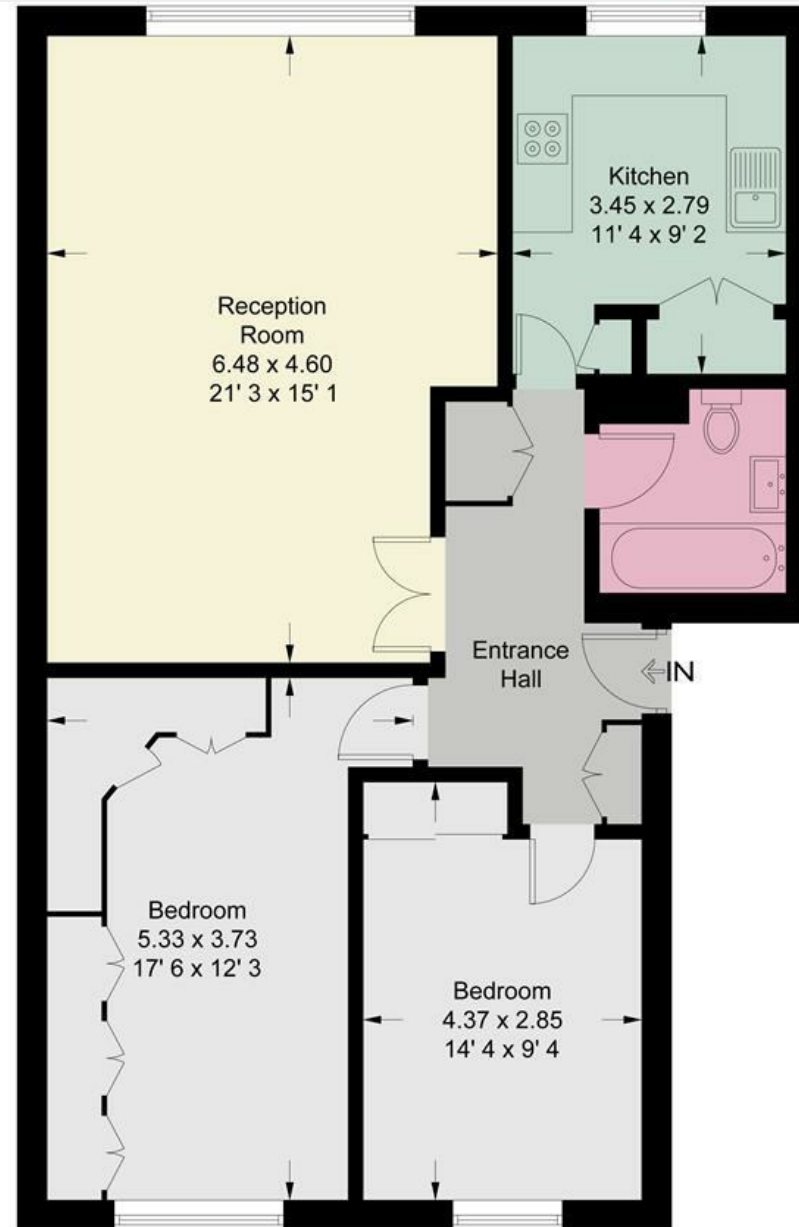


## Beaumont Court

Approximate Gross Internal Area = 868 sq ft / 80.7 sq m



JAMES  
ANDERSON



Fourth Floor



JAMES  
ANDERSON

This plan is not to scale and must be used as layout guidance only. All measurements and areas are approximate and should not be relied upon to provide accurate information. This plan must not be relied upon when making property valuations, design considerations or any other such relevant decisions. We accept no responsibility or liability (whether in contract, tort or otherwise) in relation to any loss whatsoever arising from or in connection with any use of this plan or the adequacy, accuracy or completeness of it or any information within it.







151 Upper Richmond Road  
Putney  
London  
SW15 2TX

0208 785 4400  
[sales@japutney.co.uk](mailto:sales@japutney.co.uk)

